

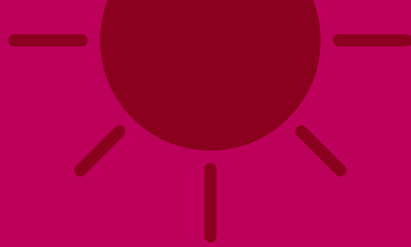
Heidelberg



# Heidelberg – your new home

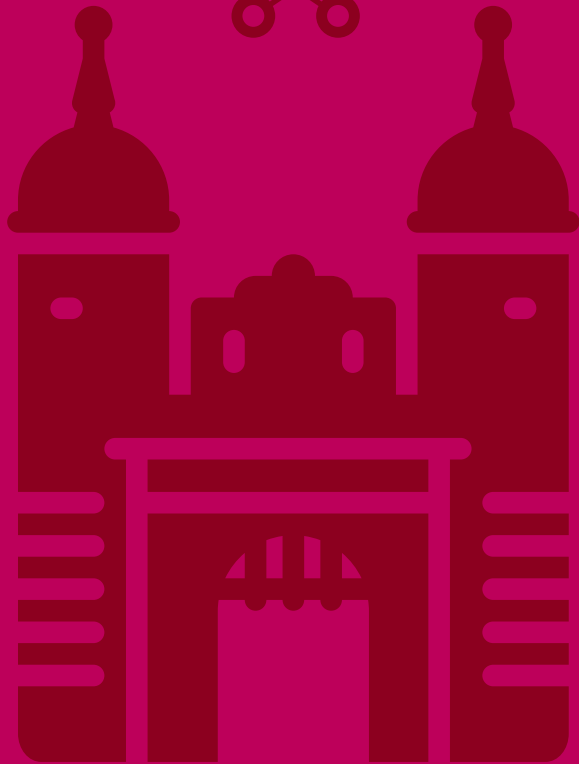
[www.heidelberg.de](http://www.heidelberg.de)

Vouchers for  
museum and  
public library  
included



# "I lost my heart in Heidelberg."

Name of a 1927 musical by  
Fred Raymond (music)  
and Fritz Löhner-Beda  
and Ernst Neubach (words)





# Welcome to Heidelberg!



## Dear new citizen,

I am pleased that you have chosen our city as your new home. Heidelberg is known for its scenic beauty, its internationality and diversity.

Living in Heidelberg means having a home: the city derives its high quality of life from the attractive mix of living and working, research and culture. As a cosmopolitan city and “Rainbow City”, Heidelberg welcomes all people with open arms, regardless of their origin or sexual identity.

We want you to feel at home here – and to that end, we support you in all areas of life: Families with children have access to an excellent childcare network. Schoolchildren can develop their talents to the full here, because Heidelberg is the best school location in Germany according to several studies. Low-income families receive targeted support in the form of a wide range of free services, and we also support trainees and students on their way, for example by subsidizing local public transport tickets and with the training house.

Eleven senior citizen centers are available as contact points for all older citizens. A wide range of cultural, leisure and sporting activities, from theaters and half-marathons to festivals with top reputations, leaves nothing to be desired.

Climate protection plays a central role in Heidelberg: for example, we promote the purchase of photovoltaic systems and electric cars, support climate-friendly renovations and are proud of our forests and green spaces.

We are also proud of our many scientific and research institutions that take their ideas and solutions for a better future from Heidelberg to the world. First and foremost is Ruperto Carola, our university of excellence, which attracts many young people to study in our city every year thanks to its international appeal.

We wish you a good start in our beautiful city and are happy to answer any questions you may have.

Your

A handwritten signature in blue ink that reads "Eckart Würzner". The signature is fluid and cursive, written in a professional style.

**Prof. Dr. Eckart Würzner**

Mayor



# Content

A good place to live . . . . .	8
First things first . . . . .	12
Heidelberg in figures . . . . .	14
Unique 15 times over . . . . .	16
International city of culture . . . . .	18
Top marks for school and childcare . . . . .	24
Leading the way in climate protection . . . . .	30
Transport for everyone . . . . .	34
World-class research . . . . .	36
A safe city . . . . .	38
Homes for everyone . . . . .	40
Embracing diversity . . . . .	44
Volunteers – a vital asset for Heidelberg . . . . .	46
Getting the public involved . . . . .	47
Partners around the world . . . . .	48
Imprint . . . . .	51



## A good place to live

Heidelberg is considered one of the most beautiful cities in Germany. Every year, around 12 million people visit the world-famous city alongside the river Neckar, to see the interplay between the castle, the old town and the river amid the hills of the Odenwald.

The about 160,000 citizens of Heidelberg appreciate Heidelberg's high quality of life. Year after year, almost all respondents in the Heidelberg survey state that they love living in their city. This is hardly surprising, given the city's many strengths.



## Family-friendly

Heidelberg supports families with offers that are among the best in Germany: exemplary childcare, a choice of outstanding schools and holiday programs, fun playgrounds, child-friendly traffic planning and much more.

## City of science

Heidelberg University is one of the best in the world. Together with the University Hospital, respected research institutes like the German Cancer Research Center, numerous research-related companies, and other higher education establishments, it has earned Heidelberg a worldwide reputation as a major center for science.

## Cosmopolitan

An estimated 56,000 people with a migration background are at home in Heidelberg. They come from around 180 countries and enrich the vibrant community.

## Good for recreation

Because of its scenic location, its favorable climatic conditions and its urban flair Heidelberg has one of the highest leisure values in Germany.

## Strong for business

The city provides jobs for around 120,000 people. Of these, around two-thirds are employed in the knowledge-intensive sector.

## Dynamic urban development

Housing is a top priority in Heidelberg. The Bahnstadt is currently being developed as a pioneering new district. It will provide living space for around 6,800 people and up to 6,000 jobs.

On four former sites of the US Army, future quarters are growing with several thousand apartments, space for innovative companies and high-quality sports, cultural and leisure facilities.

## Cultural mecca

Heidelberg impresses with its wide range of cultural offerings in the areas of music, theater, dance, visual arts and film. Heidelberg is also the first and so far only German-speaking city of literature in the UNESCO network of "Creative Cities".

## Voluntary work

Heidelberg has a diverse and well-structured range of volunteers. Their commitment is invaluable for successful coexistence and social cohesion.

## Involving people

Heidelberg's citizens are systematically involved into municipal planning at an early stage. They are thus important sources of ideas for the administration and the city council. The city's project list, which provides information on planned projects, also enables early participation.

## A safe city

Heidelberg is safe – thanks to a partnership with the state police and a broad-based municipal public order service.

## Eco-friendly

Heidelberg is an international pioneer in climate protection. As early as 2015, the United Nations named the city a "Global Green City". With the climate protection action plan, adopted in 2019, Heidelberg aims to become climate-neutral by 2030.

# First things first

The city of Heidelberg offers you information and assistance for a quick orientation in your new home.





## Homepage

At [www.heidelberg.de](http://www.heidelberg.de) you will find a comprehensive range of services and information: From an online city map to a calendar of events to the latest news from the administration and the municipal council.

## City Gazette

Free of charge for every household: On Wednesdays, the Heidelberg City Gazette lands in your mailbox.

## Social media

-  [heidelberg.de](https://www.facebook.com/heidelberg.de)
-  [heidelberg\\_de](https://www.instagram.com/heidelberg_de)
-  [heidelberg\\_de](https://twitter.com/heidelberg_de)
-  [StadtHeidelberg](https://www.youtube.com/StadtHeidelberg)

All posts of the municipal social media channels at a glance at [www.stage.heidelberg.de](http://www.stage.heidelberg.de)

## MeinHeidelberg-App

The MeinHeidelberg app provides current service information and tips. The app can be downloaded free of charge at [www.digitales.heidelberg.de/app](http://www.digitales.heidelberg.de/app).

## Important emergency numbers

Police:  
Dial **110** to reach the nearest police station.

Fire and rescue services:  
Under the European emergency number **112** you can reach the fire department and the rescue service for life-threatening cases of illness.

## Citizen Service

The Heidelberg "citizen's service" (Bürgerservice) team are on hand from **8.00 am – 6.00 pm Monday to Friday** to answer questions about the services of the City of Heidelberg and other Federal and state authorities. They can be reached on **06221 58-10580 or 115, the central number for information on any German public authority**. The citizens' service can also connect you to other services as necessary.

## Citizen service in your local area

Alternatively, you can access citizens' services in person from the various "administrative offices" (Bürgerämter) around the city:

- Bürgeramt Altstadt (Old Town)
- Bürgeramt Boxberg/Emmertsgrund
- Bürgeramt Handschuhsheim
- Bürgeramt Kirchheim
- Bürgeramt Mitte  
("Central" administrative office, covering the districts of Bahnstadt, Bergheim, Südstadt and Weststadt)
- Bürgeramt Neuenheim
- Bürgeramt Pfaffengrund
- Bürgeramt Rohrbach
- Bürgeramt Wieblingen
- Bürgeramt Ziegelhausen/  
Schlierbach

All services of Heidelberg City Administration can be accessed at the administrative offices, including: registering your new place of residence, applying for a passport, ID or parking permit, changing the place of registration of your car, applying for a police clearance certificate (Führungszeugnis) or International Driving Permit, picking up yellow recycling bags or the latest waste collection calendar, applying for a "Heidelberg-Pass" / "Heidelberg-Pass+", requesting childCare vouchers (Betreuungsgutscheine) or "housing eligibility vouchers" (Wohnberechtigungsscheine), purchasing vouchers for the women's night taxi (Frauen-nachttaxischeine), and much more. The addresses and opening times of the administrative offices can be found at [www.heidelberg.de/administration](http://www.heidelberg.de/administration).

A wide range of citizens' service information from A for "Abfallkalender" (waste collection calendar) to Z for "Zulassungsformular" (car registration form) is also available 24 hours a day on the internet at [www.heidelberg.de/buergerservice](http://www.heidelberg.de/buergerservice).

# Heidelberg in figures



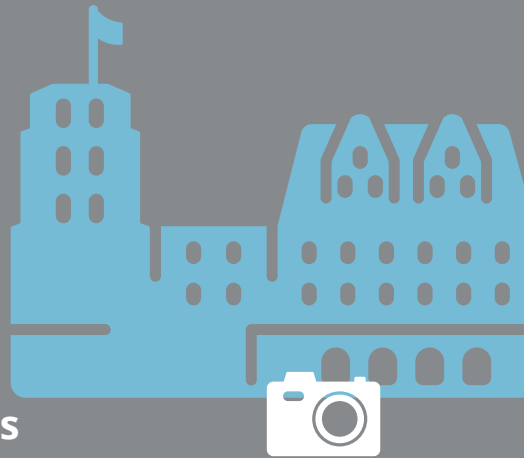
## 160.000 Inhabitants

Heidelberg is the "youngest" city in Germany. About 39 % of the Heidelberg residents are younger than 30 years, around 16 % older than 65.



## 34 % university graduates of all employees subject to social insurance contributions.

By comparison, the national average is 18.5 %.



## 12 Mio. guests per year



## 65 % of employees subject to social insurance contribu- tions work in the knowl- edge-intensive service sector and in industrial high technology

## 109 km<sup>2</sup> area

## 30 % populated area



## 70 % green space

## 120.000 workplaces

Approximately 87 % employed  
in the service sector

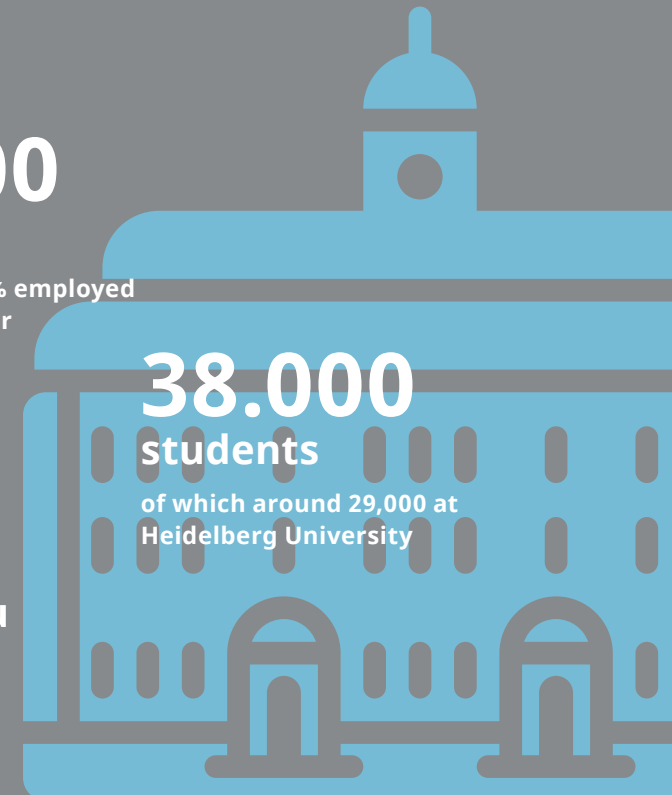


## Heidelberg4you

More than 200 locations  
are covered by the free  
public WLAN network

## 38.000 students

of which around 29,000 at  
Heidelberg University





The weekly market in front of Tiefburg Castle in the Handschuhsheim district is a popular weekend meeting place and an experience for all the senses with the regional produce on offer there.



## Unique 15 times over

Heidelberg has 15 districts, each with its own distinct identity:

- Altstadt (Old Town)
- Bahnstadt
- Bergheim
- Boxberg
- Emmertsgrund
- Handschuhsheim
- Kirchheim
- Neuenheim
- Pfaffengrund
- Rohrbach
- Schlierbach
- Südstadt
- Weststadt
- Wieblingen
- Ziegelhausen

The sheer variety of the city's districts is what makes Heidelberg such an attractive and vibrant place to live. Residents can make their own mark on their local district by joining one of the many district associations and other groups.

With the **Patrick-Henry-Village** Heidelberg's 16th district is currently

under development. It is planned to create 5,000 jobs and housing for up to 10,000 people.

For further information, please visit the section "Living in Heidelberg" at **[www.heidelberg.de](http://www.heidelberg.de)**.





## International city of culture

If you have been living in Heidelberg for some time already, you will know that it lives up to its reputation. As well as the beautiful surrounding scenery of the Odenwald hills, and the lovely river Neckar, the city offers a wide range of cultural and leisure facilities.

### Culture and leisure

Music, film, theater, dance, literature and art of all eras and styles, entertainment and celebrations, sports and recreation – Heidelberg offers a wide range of leisure activities.

**The Theater und Orchester Heidelberg** is a five-division theater with opera, concert, drama and dance, as

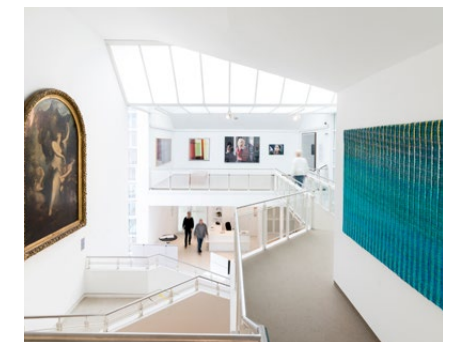
well as its own ensemble for children's and youth theater, whose capacity utilization is among the best in Germany. The theater's various festivals, such as the Heidelberger Stückemarkt, the Dance Biennale and the Heidelberg Castle Festival contribute to this. You can find out more about the theater program at [www.theater.heidelberg.de](http://www.theater.heidelberg.de).

Heidelberg is a city that knows how to continue its great literary tradition in a contemporary way. Heidelberg's tradition as the seat of the oldest university in Germany with important philosophers, theologians and literary figures, is combined with Heidelberg's lively literary scene and above-average number of libraries, bookstores, publishers and translators, publishing houses and translators. For this reason, in December 2014 it became the first and only German city to be included in the world's largest cultural network, **UNESCO's Creative Cities** Network, as a City of Literature: [www.heidelberg.de/cityofliterature](http://www.heidelberg.de/cityofliterature).

With its extensive collections, the **Kurpfälzisches Museum**, founded in 1879, offers an astounding impression of the former Electoral Palatinate

and its capital Heidelberg. Learn more about the exhibitions and collections at [www.museum-heidelberg.de](http://www.museum-heidelberg.de). As a new citizen, you can use the enclosed family voucher on your first visit to the Kurpfälzische Museum. You can redeem the enclosed family voucher for two adults and two children (see page 49).

The Mark Twain Center for Transatlantic Relations in Südstadt is a cultural center and place of exchange on the history and future issues of German-American relations. At a historically significant location in the former commandant's office, where the heart of the U.S. Army's headquarters in Europe beat, a multimedia exhibition is on display where visitors can discover various facets of German-American coexistence in Heidelberg with the help of digital aids and in a playful way. For more information, visit [www.mark-twain-center.com](http://www.mark-twain-center.com).



Old masters and modern artists: the Kurpfälzische Museum offers an exciting variety.



Friends of contemporary art can expect contemporary works in the hall of the **Kunstverein** directly next to the Kurpfälzische Museum. For more information, visit [www.hdkv.de](http://www.hdkv.de).

With the **Prinzhorn Collection** and the **Hassbecker Collection**, Heidelberg has two internationally outstanding collections of works of outsider art with a focus on “Art and Madness” and “Naive Painting” established through the work of the two Heidelberg museums Sammlung Prinzhorn and Haus Cajeth.

Art and culture dealing with the lesbian, gay, bisexual, trans\*, inter and queer (lsbtqi+ for short) community is offered annually by the **Heidelberg Queer Festival**. When it was founded in 2009, it was the first festival for queer culture. Today it is the largest and most renowned of its kind in Germany and one of the flagships of the “Rainbow City” Heidelberg.

Heidelberg also has a large number of independent institutions such as **Halle02**, **Kulturfenster**, **Deutsch-Amerikanisches Institut**, **Interkulturelles Zentrum**, **Unterwegs-Theater** and **Kulturhaus Karlstorbahnhof**. A list of all cultural institutions, sports facilities and other leisure activities can be found under Life > Leisure at [www.heidelberg.de](http://www.heidelberg.de).

The many festivals also have a special appeal, including the classical music

festivals **“Heidelberger Frühling”** and **“Enjoy Jazz”** or the renowned **“International Film Festival Heidelberg-Mannheim”**.

**“Metropolink”** is also an integral part of the Heidelberg Summer. For years, this nationally renowned festival of urban art has been actively contributing to the city’s development and gives Heidelberg a modern face.

With **“Metropolink’s Commissary”** – Germany’s largest indoor gallery for street art – there is now also a year-round venue for urban art, culture, exchange and encounters.

At the municipal music and singing school, around 4,400 students receive instruction in singing, orchestra, choir, band and theory: [www.musikschule.heidelberg.de](http://www.musikschule.heidelberg.de).

### Shopping Location Heidelberg

Heidelberg is one of the most attractive shopping cities in Germany. There are more than 500 retail stores and cafés in the city center – from the old town to Bergheim and Neuenheim. The approximately 1.4-kilometer-long Hauptstrasse alone is home to more than 250 stores and restaurants. The variety of small owner-operated stores, the many side streets and the high quality of stay create a special shopping experience in the Old Town.



The former US area Patrick-Henry-Village is the perfect setting for the popular Metropolink festival.

An overview of shopping opportunities in Heidelberg is provided by the online platform [www.vielmehr.heidelberg.de](http://www.vielmehr.heidelberg.de). There you will also find information on the citywide “Danke-Schein” voucher.

If you want to stay up to date and well entertained, the municipal library is at your disposal with a wide range of literature and media. With the library card, you can borrow a comprehensive selection of books, magazines, CDs, DVDs and electronic media. As a new citizen, you will receive the card free of charge for three months upon presentation of the enclosed voucher

(see page 45): [www.heidelberg.de/stadtbuecherei](http://www.heidelberg.de/stadtbuecherei).

Would you like to enjoy nature in your free time, learn something or visit famous sights?

There are numerous opportunities for all of these. Among the special attractions are the **world-famous castle** and the funicular to the Königstuhl. In the **Heidelberg Zoo** – the largest zoo in the Metropolitan Region – you can discover more than about 2,700 animals from all over the world. Face to face with a tiger or lion, discover a red panda high up in the branches, watch elephant bulls bathing – all this



and more is possible. Around 500,000 visitors a year also experience seals, monkeys and exotic birds. The Zoo School offers year-round events for children, teens and adults, such as zoo lessons, zoo vacations and tours with a zoo ranger. More info at [www.zoo-heidelberg.de](http://www.zoo-heidelberg.de). Tours and children's birthday parties can be booked at [www.zooschule-heidelberg.de](http://www.zooschule-heidelberg.de).

In the **city forest**, there are 250 kilometers of hiking trails, numerous rest and lookout points, themed and adventure trails, the Königstuhl walking course, designated mountain bike trails, the arboretums, the "Pferchel" forest adventure area for children and much more to discover. The city forest is outstandingly sustainable: Heidelberg has had the globally recognized PEFC seal of approval for its forest management since 2001. In 2015, Heidelberg was the first city in

Germany to receive the "Recreational Forest" certificate for the high recreational quality of its entire forest in accordance with PEFC standards. In 2018, Heidelberg was allowed to call itself "PEFC Forest Capital." This was followed in 2021 by the PEFC designation "Spa and Healing Forest" – likewise as the first German city. The environmental education program "**Natürlich Heidelberg**" lets visitors experience nature and the forests around the city in a new way.

From March to December, guided tours, excursions and hands-on activities for children, young people and adults take place. The offers, including barbecue huts, can be booked directly at [www.natuerlich.heidelberg.de](http://www.natuerlich.heidelberg.de).

The **riverbank at the Neckar** is also particularly popular as a play, sports, sunbathing and recreational area. In addition, a part is used as a soccer



Get out of the daily grind and into the fun. In Heidelberg, you can swim in five swimming pools. Whether it's a sports pool in the middle of the city, an outdoor pool with a wide-wave slide, or an indoor pool with a sauna – everyone will find their personal favorite pool here.



The river banks at the Neckar are a popular spot to meet and relax.

field, for beach volleyball courts, a large children's playground as well as a skate facility, and there are opportunities for the trend sport slackline. Recreation and relaxation can be found in any season in one of Heidelberg's **five swimming pools**, the more than 120 sports clubs and over 70 sports facilities and halls, as well as the "**alla hopp!**" facility in Kirchheim.

In the **Heidelberg Innovation Park (hip)** on Speyerer Straße, the new **SNP dome** provides additional space for club and school sports. The MLP Academics Heidelberg basketball team and the Rhein-Neckar Löwen handball

team also play there. Major sporting events such as the **HeidelbergMan triathlon**, the **SAS half-marathon**, **international rugby tournaments**, **the rowing regatta and the Dragon Boat Cup** attract recreational and professional athletes and many spectators. Other events, such as the Family Sports Day, round off the program.

The "**Explo Heidelberg**" on the grounds of the zoo offers fascinating scientific experiments to participate in. The **House of Astronomy** on the Königstuhl attracts children and adults alike to research into stars, galaxies, planets and black holes.





## Top marks for school and childcare

Heidelberg is an extremely family-friendly city. It offers the best childcare for very young children of any city in the state of Baden-Württemberg, and its schools are outstanding.

### Education

Education has a long tradition in Heidelberg, which is lived and further developed. The spectrum extends far beyond the excellent range of courses offered by the university and colleges. It includes services for all generations. The city claims the top position nationwide in early childhood education and is a nationwide pioneer in school-based learning. For more information, visit [www.heidelberg.de/bildung](http://www.heidelberg.de/bildung).

Heidelberg aims to give all its students the best school-leaving qualification possible. For example, ad-

ditional systematically structured language support is provided at all Heidelberg elementary schools and the Marie-Marcks School.

The Heidelberg School Support System (HÜS) provides support for lower-achieving students, while the Hector Children's Academy and the Hector Seminar are aimed at the highly gifted.

Of course, this also includes students with disabilities. Heidelberg has developed viable support systems when it comes to inclusion.





Place to be: the strongly frequented skate park is located right next to the riverside.

cultural, sporting or other activities and free childcare in daycare centers from birth to school entry. Both variants of the Heidelberg Pass can be applied for at the citizens' registration offices.

A **social ticket** is also available for Heidelberg Pass holders. This subsidized season ticket allows citizens to use buses and trains at low prices. This is available at the RNV customer center at the central station, and further information is available at [www.rnv-online.de](http://www.rnv-online.de). The city supports its citizens directly with subsidy programs for rented apartments and property and makes a contribution to affordable housing. More at [www.heidelberg.de/foerderprogramm](http://www.heidelberg.de/foerderprogramm)

Numerous advice centers in Heidelberg offer help in all situations.

[www.heidelberg.de/beratung](http://www.heidelberg.de/beratung)

### Senior citizens

Heidelberg is a city in which it is easy to grow old. The pages at [www.heidelberg.de/senioren](http://www.heidelberg.de/senioren) provide an overview of the wide range of information, advice and services on offer and the many ways of becoming and staying active. In eleven Heidelberg districts, **senior centers** are a central point of contact for elderly people. They offer a leisure program that

### Family

Heidelberg offers a wide range of options for balancing family and career:

- Even for the youngest children from the age of one, there are flexible opening hours, even all day, and excellently qualified specialist staff in the daycare centers.
- Elementary schools offer lunch, homework, afternoon and vacation care.
- The secondary school has the right profile for the next generation and is easy to reach. Every educational qualification can be obtained at either an all-day or a half-day school.

Heidelberg is a statewide pioneer in early childhood care and quality assurance. 80 percent of elementary school children take advantage of the extensive after-school care options.

There are children's and youth centers in Heidelberg in practically every district and run by all providers. The municipal **"Haus der Jugend"** (House of Youth) in Römerstraße offers a cross-district service. There is plenty of room here for sports, art, dance and music, both during school hours and holiday time. For more information, visit [www.hausderjugend-hd.de](http://www.hausderjugend-hd.de). The youth associations of the two large churches, for example, organize camps, events and open meetings. The **Stadtjugendring**

**e. V.**, which unites more than 50 youth associations, supports their concerns.

With the **"Feierbad"**, the city has created another flexible offer for young people in Heidelberg. On an event area in the Tiergartenbad, young people can celebrate together with free admission.

### Social

All people in Heidelberg should be able to live independently and in a self-determined manner. For this reason, the city offers a wide range of programs that give citizens on low incomes the chance to participate in social life. For example, the **Heidelberg Pass** and the **Heidelberg Pass+** provide free or reduced-price admission to numerous





The city's projects aim to empower older people, enable seniors to live as full and independent a life as possible in old age, and prevent loneliness.

ranges from memory training to hikes and lunches. The city places a lot of emphasis on promoting the health of its older citizens and designs individual exercise programs with many partners.

With the **Academy for the Elderly**, Heidelberg also has a renowned independent educational institution for people over 60 that offers courses ranging from astronomy to learning Chinese to creative writing. For more information, visit [www.akademie-fuer-aeltere.de](http://www.akademie-fuer-aeltere.de).

The city of Heidelberg aims to enable older people to live independently in their own homes for as long as possible. For example, numerous outpatient social services offer house-keeping or nursing services. The **Heidelberg Care Support Point** provides advice and arranges outpatient services (phone 06221 58-49000,

[pfligestuetzpunkt@heidelberg.de](mailto:pfligestuetzpunkt@heidelberg.de)). Information is also available at [www.heidelberg.de/pflege](http://www.heidelberg.de/pflege). Structural changes can also help people stay at home.

Information on financing conversions, for example with the help of the city's "Barrier-free Lifetime Homes" subsidy program, is available from the City of Heidelberg's housing counseling service (phone 06221 58-25300, [wohnberatung@heidelberg.de](mailto:wohnberatung@heidelberg.de)).

Those in need of care and their relatives can use a traffic light system at [www.heidelberg.de/pflegeplatz](http://www.heidelberg.de/pflegeplatz), showing whether or which nursing homes in Heidelberg currently have places available. A contact form enables initial contact with the relevant facilities.



# Leading the way in climate protection

Heidelberg is committed to lasting environmental, nature, and climate protection and plays a pioneering role in this area internationally. The framework for this is provided by the 30-point Climate Protection Action Plan, which covers all areas of life.

## Climate Protection Action Plan

Heidelberg has a pioneering role in environmental and climate protection, which the city intends to expand further. The goal: Heidelberg wants to be climate-neutral by 2050 at the latest. This means that the city wants to reduce CO<sub>2</sub> emissions by 95 percent and cut the municipality's energy requirements by half. On the way to achieving this, Heidelberg launched a major climate protection action plan in November 2019 with the first 30 concrete proposals.

This action plan sets out targets and priorities within the **"Master Plan 100 % Climate Protection"** ([www.heidelberg.de/masterplan100](http://www.heidelberg.de/masterplan100)).

The proposals affect all areas of life, from construction and housing, nutrition and consumption to nature-oriented urban design and mobility (#hd4climate).

The city can and wants to achieve these changes only together with its citizens and with stakeholders from business and society. All new citizens are cordially invited to use their move here as a starting signal for (more) commitment to climate protection.

## Energy consulting and funding programs

Interested parties can easily determine their personal CO<sub>2</sub> footprint using the Heidelberg CO<sub>2</sub> Mirror at

[www.heidelberg.de/co2spiegel](http://www.heidelberg.de/co2spiegel). Here you can find individual suggestions on how to save carbon dioxide.

The subsidy program for the rational use of energy promotes thermal insulation of the house and ventilation with heat recovery. There are also support programs for sustainable water management and environmentally friendly vehicles. Information is available at [www.heidelberg.de/foerderprogramm](http://www.heidelberg.de/foerderprogramm).

The city's free energy advice hotline provides citizens with expert advice on all aspects of energy conservation and climate protection: 06221 58-18141 and [klimasuchtschutz@heidelberg.de](mailto:klimasuchtschutz@heidelberg.de). It is supported by the Heidelberg-Rhein-Neckar-Kreis gGmbH **climate protection and energy consulting agency**. For further information, visit [www.kliba-heidelberg.de](http://www.kliba-heidelberg.de).

Anyone interested in generating electricity from solar energy on their own roof can get free personal advice – whether as an owner, landlord, tenant or company (information on the solar campaign at [www.heidelberg.de/sonnenstrom](http://www.heidelberg.de/sonnenstrom)).

The installation of photovoltaic systems on roofs and facades is also being promoted to encourage private individuals, housing associations, businesses and farmers to exploit the solar power potential in Heidelberg. For more information, visit [www.heidelberg.de/foerderprogramm](http://www.heidelberg.de/foerderprogramm).





The Bahnstadt district is characterized by passive house construction and is an international lighthouse project.

### Passive house construction: Bahnstadt

With Bahnstadt, Heidelberg has launched an outstanding climate protection project that serves as a global role model. Passive house construction is the standard for the entire district - so far, this is unique in Germany. Heidelberg aims to become a climate-neutral city by 2050 at the latest. [www.heidelberg-bahnstadt.de](http://www.heidelberg-bahnstadt.de)

### Sustainable energy

With its 2020/2030 energy concept, Stadtwerke Heidelberg is expanding a climate-friendly energy supply. The wood-fired combined heat and power plant, which supplies the Bahnstadt district with heat and electricity, was a first building block. Further plants and an energy and future storage facility are

being built in the Pfaffengrund energy park. [www.swhd.de/energiekonzeption](http://www.swhd.de/energiekonzeption)

### Education for sustainable development

The Education for Sustainable Development program teaches children about the impact of their own actions on the future. Numerous projects ensure that ESD topics are integrated into everyday school life: In the “**E-Team Project**”, for example, students work to protect the climate. Mobility projects motivate children to travel in a healthy and environmentally friendly way. At the popular “**Natürlich Heidelberg**” series of events, children and adults learn how important nature conservation and environmental protection are. Information is available at [www.heidelberg.de/bne](http://www.heidelberg.de/bne).

### Nature and landscape

When it comes to preserving biodiversity, ecological aspects play the leading role in Heidelberg. For example, as part of the species protection plan, maintenance measures are carried out in ecologically valuable areas of the district to preserve the habitat of rare animal and plant species. In addition, with the help of the program for biotope networking, connecting structures in the form of meadows are created in agriculturally used areas. Animals can use these as migration corridors. More information on these and other conservation activities is available at [www.heidelberg.de/naturundlandschaft](http://www.heidelberg.de/naturundlandschaft).

### Sustainable consumption

With projects relating to the topic of “sustainable consumption”, the City of Heidelberg would like to encourage citizens to become aware of their responsibility as consumers and to contribute to sustainable development in their everyday purchasing decisions. Among other things, Heidelberg has been designated a **Fair Trade Town**. Since 2021, on the initiative of the city, producers of regional food from Heidelberg and the region have been advertising their products with the new “**Genial regional**” label. In addition to its commitment to fair trade and regional products, the city also wants to promote the use of organic foods. As part of the “**Bio in Heidelberg**” campaign, various projects are being implemented to this end together with educational institutions as well as facilities along the value chain – from farmers to retailers to restaurants. Two shopping guides with tips on sustainable purchasing and consumption alternatives are available at [www.heidelberg.de/bio](http://www.heidelberg.de/bio).



Little people, big impact: It is never too early to be a climate activist.





## Transport for everyone

Environmentally conscious mobility is important to the city. Heidelberg is therefore promoting the expansion of local public transport and the cycling network.

With the **Heidelberg Mobility Network**, the streetcar network is being comprehensively expanded, including the reconstruction of the central station stop and the new streetcar to Bahnstadt.

Since January 2019, Heidelberg has been the first municipality in the region to use electric buses in the city center.

### Local public transport

Just under a third of all Heidelberg residents primarily use public transportation. With the Heidelberg Mobility Network, the streetcar network has been extensively expanded in recent years, including the construction of a new streetcar route through Bahnstadt and the modernization of the central station stop. For more information, visit [www.heidelberg-mobinetz.de](http://www.heidelberg-mobinetz.de).

For public transport timetable information, visit [www.vrn.de](http://www.vrn.de). Since 2016, the city of Heidelberg has been promoting the switch from car to public transport with an annual ticket for local public transport for citizens who voluntarily deregister their vehicle.

### Cycle paths

33 percent of Heidelberg residents regularly use bicycles in the city center. Awarded the title of **“Bicycle-Friendly Municipality”** by the state, Heidelberg

is a model municipality for the Rad-KULTUR initiative of the Baden-Württemberg Ministry of Transport and Infrastructure. The city wants to further increase its attractiveness for cyclists and launched the bike offensive – a whole bundle of measures to improve cycling [www.heidelberg.de/fahrradfreundlich](http://www.heidelberg.de/fahrradfreundlich).

### Good connections to highways and air traffic

Even distant destinations can be reached quickly and easily: By car, you can be on the Autobahn 5 in just a few minutes. Within just 50 minutes, you can reach Frankfurt Airport and Stuttgart in 90 minutes. With the long-distance train service, the journey is even faster. In addition, long-distance buses serve numerous destinations throughout Germany.





The European Molecular Biology Laboratory (EMBL), one of the world's best-known biological research laboratories, has its headquarters in Heidelberg.

## World-class research

Heidelberg is one of the most important centers of science worldwide.

Founded in 1386, **the University of Heidelberg** is the oldest university in Germany. Its leading role in the academic scene in Germany and abroad is reflected in its classification and promotion by central and state government as an "university of excellence". According to the Shanghai ranking, Ruperto Carola is regularly the best-ranked German university

and counts among the world's Top 50. 38,000 students take advantage of the courses offered by the various universities, cooperative education institutes and other higher-education establishments in Heidelberg – including **the Heidelberg University of Education (PH Heidelberg), the private SRH University and the University of Jewish Studies.**

Heidelberg is one of the world's top locations for up-and-coming industries such as biotechnology and organic electronics. Excellent cutting-edge research clusters and renowned research institutes such as the European Laboratory for Molecular Biology (EMBL), **the German Cancer Research Center (DKFZ) and three Max Planck Institutes** contribute to Heidelberg's outstanding worldwide reputation as science hub.

As **Heidelberg Mannheim Health & Life Science Alliance**, the two medical faculties and university hospitals as well as the renowned research institutions in the region form a unique alliance in Germany. The goal: to make the Rhine-Neckar region an international center of excellence in life sciences, medical technology and health care industry. This should also raise the already first-class patient care onto a new level.

Since 1901, 57 personalities whose lives are connected to Heidelberg, have received the Nobel Prize. The most recent one, the Nobel Prize of Chemistry, was awarded to Professor Dr. Stefan W. Hell for his development of super-resolution microscopy.

34 percent of all those who work and pay statutory social security contributions in the city hold a degree.

Both Heidelberg and the Rhine-Neckar metropolitan region are characterized by close cooperation between science and business. This is reflected in a large number of interdisciplinary research centers such as the Heidelberg Technology Park, the "Industry on Campus" projects between Heidelberg University and different companies or in the office and laboratory buildings SkyLabs and SkyAngle in the new Bahnstadt district.

The exceptional role of science in Heidelberg also benefits other aspects of Heidelberg life: enabling daycare centers and schools to offer special activities, creating exciting local jobs and profiting those working in the creative industries. The city wants to leverage this effect further: **The International Building Exhibition Heidelberg (IBA)** is dedicated to building and exploring the knowledge city of the future with its motto "Knowledge | creates | City".

With the new **"Heidelberg Congress Center"** in the Bahnstadt district, congresses in science and business will find a new home. This will enable the "Stadthalle" in the old town to concentrate on its strengths as a concert and cultural center again. The **"Stadthalle"** is currently undergoing extensive renovation.





## A safe city

Fighting fires, saving lives, ensuring traffic safety, settling disputes – there are many aspects to making sure that Heidelberg is a safe place to be around.

### The Heidelberg Fire Department

Around the clock, the men and women of the Heidelberg Fire Department are on duty 24 hours a day to provide quick and effective help in emergencies. They are called out 2,500 times a year to fight fires, rescue citizens from road accidents and, increasingly, help people affected by extreme weather situations. On average, they save between 20 to 25 people a year out of life-threatening situations.

Doing this job properly requires intensive training, including annual training sessions in the fire station's special gas-

mask training facility, as well as state-of-the-art equipment. Three turntable ladders help rescue people from higher floors.

In the districts of Pfaffengrund, Wieblingen and Ziegelhausen, new fire stations have been built. In October 2020, the new integrated control room started operations, coordination all calls to the emergency number 112 in Heidelberg and the Rhein-Neckar-region.

It is the operations center for non-police emergency response for Heidelberg and the Rhine-Neckar district.



More than 600 members of the DLRG Heidelberg are committed to improving safety on and along the Neckar River.

### Youth fire brigade and volunteer fire department

In addition to the professional fire department with its more than 116 full-time firefighters, more than 400 citizens of the city of Heidelberg are involved on a voluntary basis in eight departments of the volunteer fire department. The children's and youth fire brigade has around 220 members, around a third of whom are girls. In addition to firefighting lessons, they meet for joint activities.

### Working together

For a safe Heidelberg and for an optimal response when disaster strikes, the city administration, police and rescue services work closely together. The "municipal public order service" (Kommunaler Ordnungsdienst), for example, makes sure that bars and shops in the old town close on time and responds to disturbances of the peace. The "municipal enforcement service" (Gemeindevollzugsdienst) monitors parking and adherence to the rules of

the road. To protect against flooding, the city's civil engineering office works not only with the fire department and the municipal public order service but also with the relief organization DLRG as well as the civil protection organization Technisches Hilfswerk and, if necessary, the Red Cross, the Malteser emergency service and the Army.

### Coping with disasters

Tips are available in the "Disasters Alarm" guidebook, which is available free of charge and can be downloaded from [www.bbk.bund.de](http://www.bbk.bund.de). Official warnings can be received directly on your smartphone via the warning app NINA. The app also provides warnings of severe weather or flood situations as well as advice on the correct reaction to such weather events. It is available free of charge for Android and iOS.

Always think about the people around you: Inform them in case of an emergency situation and support them if they need help.



### Fighting discrimination

It is important to the City of Heidelberg that all of its residents live together harmoniously. **The Office for Equal Opportunity** is the point of contact for anyone who wants to take action against discrimination or who has experienced it themselves – whether on basis of their place of origin, a disability, age, sexual identity or gender. Further information as well as advice and support are available by calling 06221 58-15550, by e-mailing [antidiskriminierung@heidelberg.de](mailto:antidiskriminierung@heidelberg.de) and looking online at [www.heidelberg.de/antidiscrimination](http://www.heidelberg.de/antidiscrimination).

### Help in cases of domestic violence

The **Heidelberg Intervention Model against violence in relationships (HIM)** supports those affected by domestic violence to escape the cycle of violence. Women and children can turn to the Women's Intervention Center for help and counseling. The Men's Intervention Center and the men's hotline offer counseling and therapy for perpetrators of violence as well as support and counseling for men who have experienced violence themselves. Further information is available at [www.heidelberg.de/him](http://www.heidelberg.de/him).



Bahnstadt is particularly popular with families and is Heidelberg's district with the most children.

## Homes for everyone

Since 2012, just under 3,900 new apartments have been built in Heidelberg. This has been made possible by the construction of new neighborhoods such as Bahnstadt as well as the reuse of former US military sites.

### Dynamic growth

Heidelberg is a popular place to live and work. However, this popularity puts a strain on the housing market. To create sufficient living space for people of all income groups, the city council unanimously adopted the Housing action program. An annual 800 new

apartments are to be built in the coming years. In addition, the city runs two subsidy schemes for tenants and buyers and builds special family-friendly apartments in the new district of Bahnstadt. Moreover, the development of affordable housing on the former US military sites is a top priority.



### **Bahnstadt: A lively mix of housing, science and business**

The new district of Bahnstadt has model character: it is the largest passive house settlement in the world. With a vibrant mix of housing, science and commerce, the district creates new spaces to work and live in. Ultimately, Bahnstadt will be home for around 6,800 people and provide jobs for 6,000, mainly in research and science-based companies.

With a total area of 116 hectares, the Bahnstadt is larger than the entire old town of Heidelberg and one of the largest urban development projects in Germany.

In addition to green and open spaces, streets and watercourses as well as kindergartens, an elementary school, a community center, a cinema and a local shopping center have been created. The new **Europaplatz** will connect the district with the central station. The

new conference center is also being built here. For further information, visit [www.heidelberg-bahnstadt.de/en](http://www.heidelberg-bahnstadt.de/en).

### **The former US Army sites: A once-in-a-lifetime opportunity**

The withdrawal of the U.S. Army represents a unique opportunity for Heidelberg. 180 hectares are now free for new developments: for affordable housing, cultural and recreational offers, innovative scientific institutions, attractive business premises and much more.

There are five former US sites to be redeveloped: Mark-Twain Village / Campbell Barracks (43.3 hectares) in Südstadt, US Hospital (9.3 hectares) in Rohrbach as well as Patton Barracks (14.8 hectares), Patrick-Henry-Village (97.2 hectares) and the Airfield (15.6 hectares) in Kirchheim.

The site in the southern part of the city is primarily used for affordable



Future in a nutshell: the Heidelberg Innovation Parc (hip) on the premises of the former Patton Barracks.



Patrick Henry Village (PHV) is to be further developed into a sustainable 16th district and become a model location for the use of digital technologies, innovative mobility concepts and climate-neutral energy supply.

housing. The first residents moved here in the summer of 2016. The plans for former US hospital also consist mainly of residential buildings. On the site of Patton Barracks, the Heidelberg Innovation Park is being developed and Patrick-Henry-Village is to become a model city district of the future for up to 15,000 people. For further information, visit [www.heidelberg.de/english/home/develop/conversion](http://www.heidelberg.de/english/home/develop/conversion).

### **IBA Heidelberg: "Knowledge | creates | city"**

The Heidelberg International Building Exhibition (IBA) "Knowledge | Creates | City" illuminates urban planning in the knowledge city of the future over a period of ten years until 2022.

The IBA covers locations throughout the whole city and many areas of life. One of the projects, which involves a substantial public consultation element, is the development of a concept for the further use of Heidelberg's largest conversion area Patrick Henry Village. For further information, visit [www.iba.heidelberg.de/english](http://www.iba.heidelberg.de/english).





## Embracing diversity

Heidelberg is diverse: people from 180 nations, with different gender and sexual identities, old and young, people with and without disabilities live here. With numerous offers, measures and projects, the city is working with many partners to ensure that all people here have the same opportunities and can feel at home in Heidelberg.

As a **Rainbow City**, Heidelberg is taking decisive steps to strengthen LGBTIQ+. Since 2016, the members of the “Sexual and Gender Diversity Round Table” have been advising the city administration. Around 15 local LGBTIQ+ initiatives contribute their expertise here in order to work out fundamental and current problems of LGBTIQ+ and to counteract exclusion and disadvantage through appropriate recommendations. With projects such as the **Trans\* Action Weeks Rhine-Neckar**, the cities of Heidelberg and Mannheim offer a platform to raise awareness and educate about trans\* persons and the diversity of gender identities and their forms of expression.

With the **Intercultural Center**, Heidelberg is creating a place for cultural participation that promotes cohesion in the city's society and the integration of people with a history of migration through various participation formats and an intercultural program. With the **“Interreligious Dialogue”**, the city facilitates a successful exchange of religions in Heidelberg. In order to ensure that the interests of foreign residents are also heard, the **Migration Advisory Council** has had an advisory function in the city council for more than 20 years. Further information can be found at [www.heidelberg.de/integration](http://www.heidelberg.de/integration).

The City of Heidelberg is intensively committed to the equal participation and self-determination of people with disabilities. This includes barrier-free communication as well as comprehensive counseling and care services, the **“Wohnberatung” (housing counseling)** as a specialist office for barrier-free planning, building, and living, or the improvement of mobility, for example through the wheelchair cab. The municipal representative for the disabled is the primary contact person for concerns of people with disabilities and their relatives and also advises the administration on matters of inclusion. Contact: [behindertenbeauftragte@heidelberg.de](mailto:behindertenbeauftragte@heidelberg.de), 06221 58-15590. Further information at [www.heidelberg.de/inklusion](http://www.heidelberg.de/inklusion).





## Volunteers – a vital asset for Heidelberg

For more than 15 years, the city administration has been supporting voluntary work.

Heidelberg values its volunteers: with the **Civic Engagement Coordination Office** (Koordinierungsstelle Bürgerengagement) as part of the mayor's office, there is a central contact point for voluntary work in the city hall. Once a year, it awards the **honorary plaque (Ehrenamtsmedaille)** for outstanding civic commitment.

The **volunteer agency** (Freiwilligen-Agentur) of the "Der PARITÄTISCHE" charity is an important municipal partner and an important contact for citizens who would like to get involved. An online database of volunteering opportunities can be found at **[www.freiwilligenagentur-heidelberg.de](http://www.freiwilligenagentur-heidelberg.de)**.

The Civic Engagement Coordination Office is happy to answer any questions about voluntary work in Heidelberg. Please visit **[www.heidelberg.de/buergerengagement](http://www.heidelberg.de/buergerengagement)** for further information.

## Getting the public involved

Getting the public even more involved in municipal decision-making is very important to the City of Heidelberg.

The City of Heidelberg wants citizens to be involved from as early a stage as possible in decision-making on municipal projects, for example the redevelopment of the former US Army sites and the master plan for the Neuenheimer Feld area. To ensure the smooth running of this process, the city has drawn up **"guidelines for public participation"** (Leitlinien für mitgestaltende Bürgerbeteiligung) in consultation with the public.

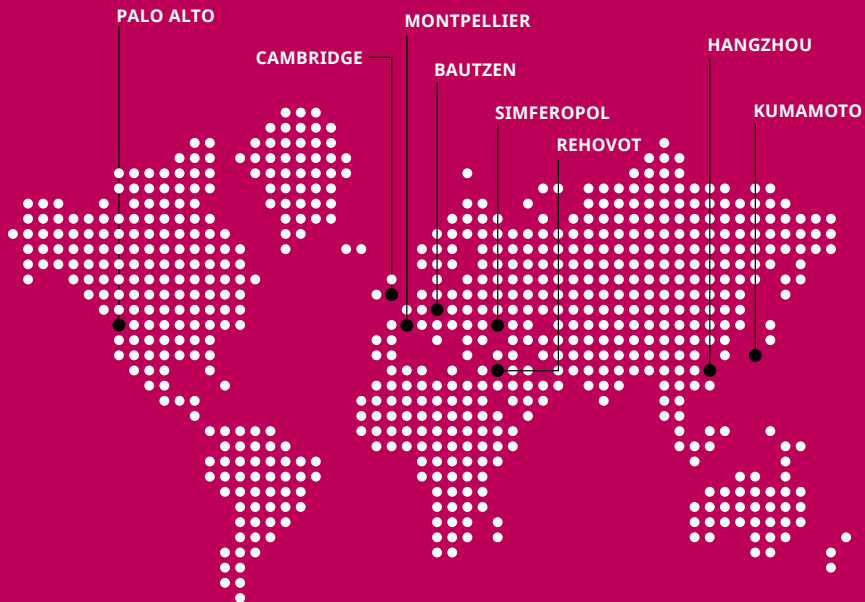
The people of Heidelberg also have access to a **"planning list"** (Vorhabenliste) that is updated regularly with details of current and forthcoming municipal projects. As well as indicating the stage a project has reached, the list also includes information on project costs and names relevant contacts. In this way, it facilitates dialogue between the city and its residents from an early stage of a project.

You can direct any questions you have about public participation in Heidelberg to the municipal "coordination point" (Koordinierungsstelle). For more information, visit **[www.heidelberg.de/involvement](http://www.heidelberg.de/involvement)**.



# Partners around the world

Heidelberg entertains partnerships with eight cities on three continents.



## Contribution towards international understanding

As an international city with almost 12 million guests a year and about 45,000 citizens with a migrant background, Heidelberg has eight partnerships: with **Palo Alto** in the US, with **Hangzhou** in China, with **Montpellier** in France, with **Cambridge** in Great Britain, **Rehovot** in Israel, **Bautzen** in Germany, **Simferopol** on the Crimean peninsula and with **Kumamoto** in Japan.

Palo Alto and Hangzhou are Heidelberg's youngest partner cities. Palo Alto in the US state of California is considered the "capital" of Silicon Valley. Hangzhou is the location of major scientific and educational institutions and is particularly strong in the high-tech fields of biomedicine, informatics and digital new media. In addition, there are friendly relations with the cities of Mostar (Bosnia-Herzegovina), Jelenia Góra (Poland) and Heidelberg (South Africa/Gauteng Province).



# Voucher

Granting free entry\*  
to the Kurpfälzisches Museum

\*valid for 2 adults and 2 children

# Voucher

Can be exchanged for a library card  
for the Public Library (Stadtbücherei)  
valid for 3 months





# Discover the past

The unique collections at Kurpfälzisches Museum, from art, handicrafts and archaeological finds to fascinating insights into Heidelberg's history, take visitors on a thrilling journey of discovery through the millennia. We look forward to your visit!

## Kurpfälzisches Museum Heidelberg

Hauptstraße 97  
69117 Heidelberg  
Phone 06221 58-34020  
kurpfaelzischesmuseum@heidelberg.de  
www.museum.heidelberg.de

## Opening times

Tuesday to Sunday 10.00 am – 6.00 pm  
Mondays: Closed

## Nearest public transport

Universitätsplatz, Peterskirche



# Reading, listening, watching

## Free library card valid for 3 months

At our library you will find: 230,000 books, more than 300 international magazines and newspapers, CDs and DVDs, superb premises, help and advice, 46 opening hours per week, a 24-hour digital library service, a mobile library, events, digital workstations, a library café, user information and parking area.

## Heidelberg Public Library

Poststraße 15  
69115 Heidelberg  
Phone 06221 58-36100  
stadtbaecherei@heidelberg.de  
www.stadtbaecherei.heidelberg.de

## Opening times

Tuesday to Friday 10.00 am – 8.00 pm  
Saturdays 10.00 am – 4.00 pm

## Nearest public transport

Stadtbücherei, Römerstraße



## Links

**Heidelberg City Administration /  
City of Heidelberg website**  
[www.heidelberg.de](http://www.heidelberg.de)

**Online 'citizens' service'**  
[www.heidelberg.de/buergerservice](http://www.heidelberg.de/buergerservice)

**Calendar of events**  
[www.heidelberg.de/veranstaltungen](http://www.heidelberg.de/veranstaltungen)

**Heidelberg-App**  
[www.meinheidelberg.de](http://www.meinheidelberg.de)

**City of Heidelberg on social media**  
[www.facebook.de/heidelberg.de](http://www.facebook.de/heidelberg.de)  
[www.twitter.com/heidelberg\\_de](http://www.twitter.com/heidelberg_de)  
[www.instagram.com/heidelberg\\_de](http://www.instagram.com/heidelberg_de)  
[www.youtube.com/StadtHeidelberg](http://www.youtube.com/StadtHeidelberg)

## Imprint

**City of Heidelberg**  
Marktplatz 10  
69117 Heidelberg

**Text**  
Public Relations Office

**Design**  
City of Heidelberg,  
Brand Communication

**Photos**  
Tobias Dittmer: Cover and  
Pages 8, 28, 30, 34, 46  
Julian Beekmann: Pages 3, 4, 6  
Steffen Diemer: Pages 16, 18, 22, 41,  
50 (o.)  
Tobias Schwerdt: Page 19 (u.)  
DNA Collective: Page 21  
Sven Ehlers / Stadtwerke HD: Page 23  
Envato.com: Page 24  
Philipp Rothe: Page 26  
Christian Buck: Pages 32, 33, 42, 49 (u.)  
Kinga Lubowiecka / EMBL: Page 36  
Lukas Rübenacker: Page 38  
Lukas Schütz / DLRG HD: Page 39  
KCAP: Page 43  
Uwe Anspach: Page 44  
Gattner / KMH: Page 49 (o.)

Copyright © 2020 City of Heidelberg.  
All right reserved. Reprints (including  
excerpts) only with the explicit per-  
mission of the City of Heidelberg.

**Edition**  
1st Edition, June 2022





**City of Heidelberg**

Marktplatz 10  
69117 Heidelberg

Phone 06221 58-10580

Fax 06221 58-10900

[stadt@heidelberg.de](mailto:stadt@heidelberg.de)

[www.heidelberg.de](http://www.heidelberg.de)